

Fleet Notes of Interest

Stabilator Pin Removal Clamp (SPRC), TM 1-1520-280-23&P, WP 0623

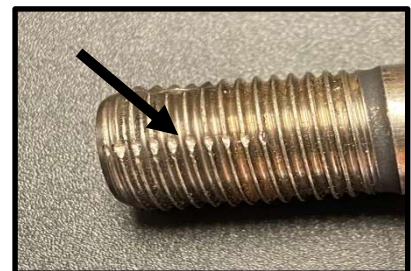
The Utility Helicopters Project Office has been aware of the difficulties maintainers have trying to remove the outboard stabilator (WP 0617) (Figure 1) due to the attachment bolts becoming stuck. Because the stabilator bolt heads are within a safety wire housing, the clearances too tight to permit the insertion of a wrench or socket. Maintainers are then required to pound on the bolts with a hammer and brass bar, often resulting in damage to both the bolts (Figure 2) and the bushings.



Figure 1- UH-60M Stabilator Pivot pin location

To eliminate this induced damage and reduce the effort needed to extract the bolts, the Stabilator Removal Clamp (SPRC) was developed by United Protective Technologies (UPT).

To use the SPRC tool, open the tool's Tensioning Bolt and Brass Push Screw. Next, place the SPRC tool over the hinge assembly (Figure 3). The Brass Push Screw is centered on the the stabilator bolt and hand tightened until contact is made. Next, a wrench is applied to the Tensioning Bolt, and slowly tightened until the stabilator bolt breaks free.



*Figure 2 -
Burred
Threads on Pin
after Hammer*

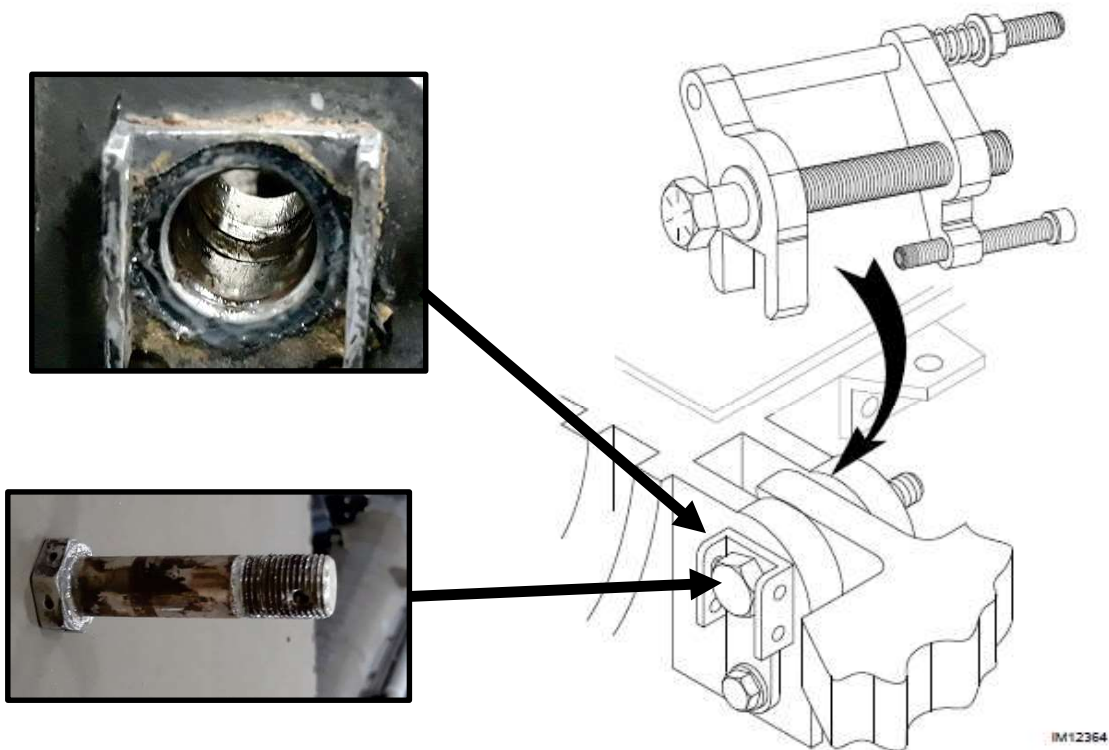


Figure 3 - SPRC Clamp (WP 0623, TM 1-1520-280-23&P) Installation on the Bolt/Hinge Assembly

The SPRC tool has been integrated into existing Technical Manual maintenance procedures and provides the following benefits:

1. Reduces maintenance time of bolt removal to a few minutes
2. Prevents damage to the stabilator bolts and hinge lugs.
3. Designed for one-person operation.

The SPRC tool (TM 1-1520-280-23&P, WP 3253, Item 377, NSN 5340-01-688-0350, Tool Number UPT-SPRC-001) is a DLA stocked item, available through normal supply channels. For additional information, about this tool, please visit <https://rbepteam.org/sprc-tool>.